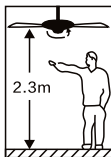
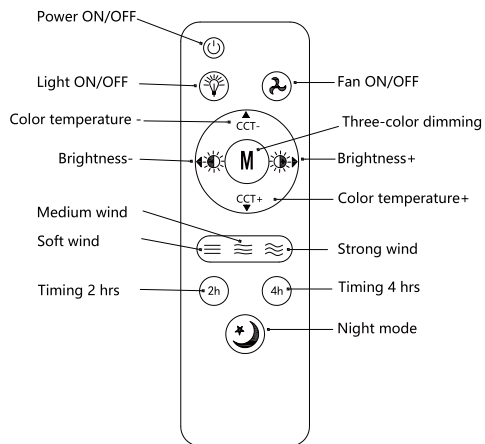


# Instruction Manual

Model	Flower Fan Light
Input Voltage	85-265V ~50/60Hz
Wattage	Φ420mm Φ520mm
CCT	3000K-6500K
Wind Speed	Soft wind/ Medium speed wind/ Strong wind
Memory Function	YES
Timing Function	YES
Sudden-stop Protection	YES
Control Mode	Remote Control / Wall Switch

## I. Remote Control Instruction



## II. Packing List:



×1  
Lamp Body

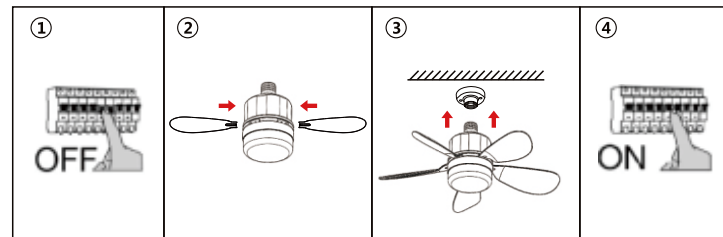


×5  
Fan Blades



×1  
Remote Control

## III. Installation:



Step1: Make sure to cut off the power before installation.

Step2: Assemble the 5 fan blades as picture shown

(The upward side is marked on the fan blade: UP SIDE)

Step3: Install the whole lamp on the socket.

Step4: After Installation finished , turn on the power, you can use the fan light by remote control.

## IV. Tips

1. Even if we have a sudden stop protection , To reduce the risk of injury , Please do not put fingers or other things into the working fan blades.
2. For daily cleaning, you can use a damp cloth to wipe the surface without using corrosive chemicals.
3. The fan blades can also be disassembled directly , convenient for cleaning and storage.