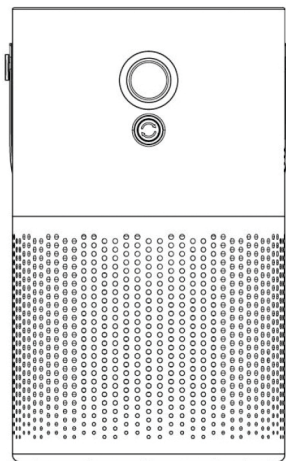


FRESHR



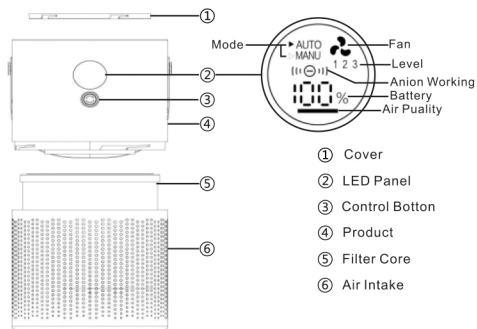
Air Purifier

Thank you for purchasing our products
Please read the instruction carefully before use
Please keep the instruction manual properly

Product Parameters

- Product name : FRESHR Air Purifier
- Product model : GXZ-AP01
- Material ABS / Filter / PCBA
- Battery Voltage : 3.7V
- Battery Capacity : 10000mAh
- Battery Power : 37Wh
- Input Voltage / Current : DC5 0V / 1500mA(±20%);
- Fan working current : 1st speed / 300mA;
2nd speed / 595mA;
3rd speed / 1190MA (±10%);
- Fan working power : 1st speed / 1.15W;
2nd speed / 2.2W;
3rd speed / 4.5W;
- Anion concentration : $8 * 10^6$ PCS/cm³
(distance the emitter from 10 cm test)
- PPM : < 0.05PPM
- Product size : 160 * 160 * 268mm
- Product weight : 1.25kg
- Executive standard : GB4706.45-2008
- Inspection : Qualified
- Place of origin : Shenzhen,China

Product Parts



Function Operation

- Button "M" function : Press "M" button once, start the Auto Mode.Fan will switch to gear according to Air quality.Press "M" button twice, for manual mode 1 gear.Press "M" button third time, shift manual mode to 2 gears.Press "M" button fourth time, shift manual mode to 3 gears.Press "M" button fifth time turn off the product.
- Anion function : Long press "M" button once,start the anion,long press "M" button twice,turn it off.
- Night Mode : Double press "M" button once,turn on the night light ; Double press "M" button twice, turn it off
- Type-C interface : The charge port can be charging as power supply.
- Power off switch : Place the outage switch shift to "ON" and connecting the power source,place it to "OFF" and turn power source off.

Notice : Anion function can be working in any status as well as controlled turn on or off separately in any conditions.

LED Panel

- Air quality light color : The air quality indicates on "RED" ,means the air quality is very bad,the air quality indicates on "YELLOW" ,means the air quality is poor,the air quality indicates on "Green" , means air quality is good.
- Air quality indicator : during the product connect to power source,after LED Panel gets initializing,air quality light indicates on Green,after warm up 3 mins which the product transfers to indicator light color according air quality.
- Anion indicator : start the anion,light indicate on Green,flash,when turn it off, light indicates on RED and put out.
- Work instruction : When automatically mode direct to "AUTO" , fan indicates on 1-2-3 according to air quality changes.The button white background for breath light ; when manual mode direct to "MANU" ,fan 1 gear indicates on 1,fan 2 gears indicate on 2,fan indicates on 3rd(when it is under all manual mode on condition,the button white background for lasting light) ; when turn off function,all indicator light put out.
- Battery indicator : when charging,battery is changing from 0-100%.100% isfull battery.
- Low battery : when battery under 10%,digital 10 flicker till power off.Reboot it to start the function,digital 0 flickers 10 times till power off.

Notice : When working in all modes,the fan working display flashes and the negative ion display flashes.

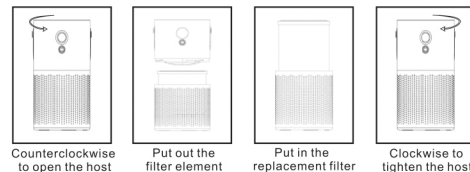
Battery Using Time

- Charging current : 1500mA (20%) , full battery approx 7 hrs.
- 1st gear working 32 hrs,2nd gear working 15 hrs, 3rd working 7 hrs.
- Please first charge the product for more than 3 hours before use.
- It is recommended to charge the product a time per 3months in case of battery damage and unserviceable.
- When the product is not working for a long time,please make sure it can storage under low humidity or room temperature in case of environment factors to the product function damage.

Attentions

- It is recommended to do a clean once in half month to the product,which replaced the filter per 3 months.
- Prohibited wash filter with water.Please aim the hairdryer directly to HEAP core inside blow more times,or with soft brush,toothbrush cleans up the dust which attached the filter net around.
- Please DO NOT knock it purposely when you clean filter core to ward off the filter core construction damages that cannot be filtering effect.
- The product is apply to 10-20 square meters.If room space exceed this range please select the proper product.
- The product working will come about slight ozone,please turn the product off and open the window and ventilate if you feel uncomfortable to the body.
- Please DO NOT spray essence,essential oil,perfume etc.corrosive liquid to the filter.

Filter element replacement steps



Product Accessories :

Air purifier*1pc,Type-c cable*1pc, User manual*1pc,Qualified certificate*1pc