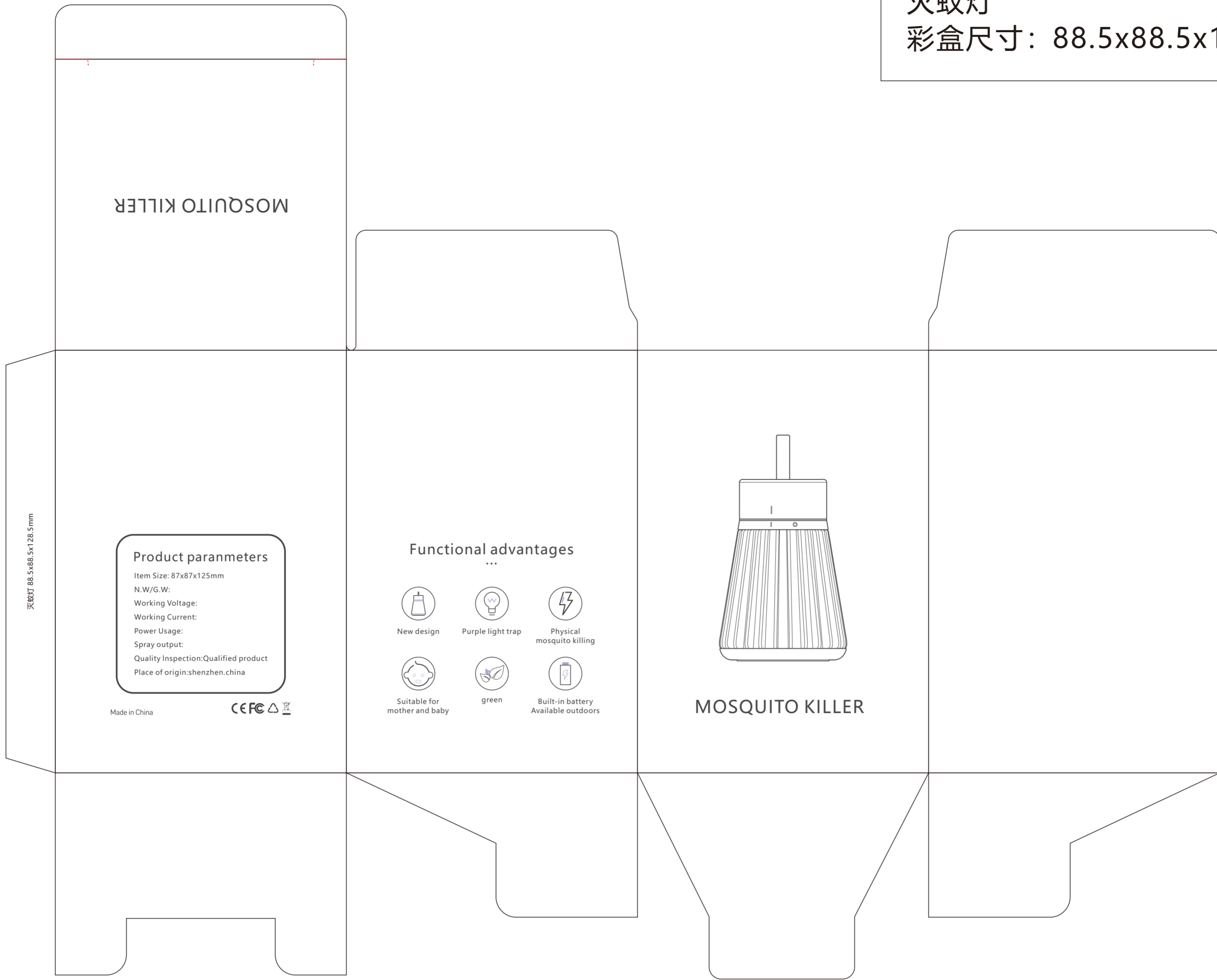


灭蚊灯
彩盒尺寸：88.5x88.5x128.5mm



Product parameters
Item Size: 87x87x125mm
N.W./G.W:
Working Voltage:
Working Current:
Power Usage:
Spray output:
Quality inspection: Qualified product
Place of origin: shenzhen.china

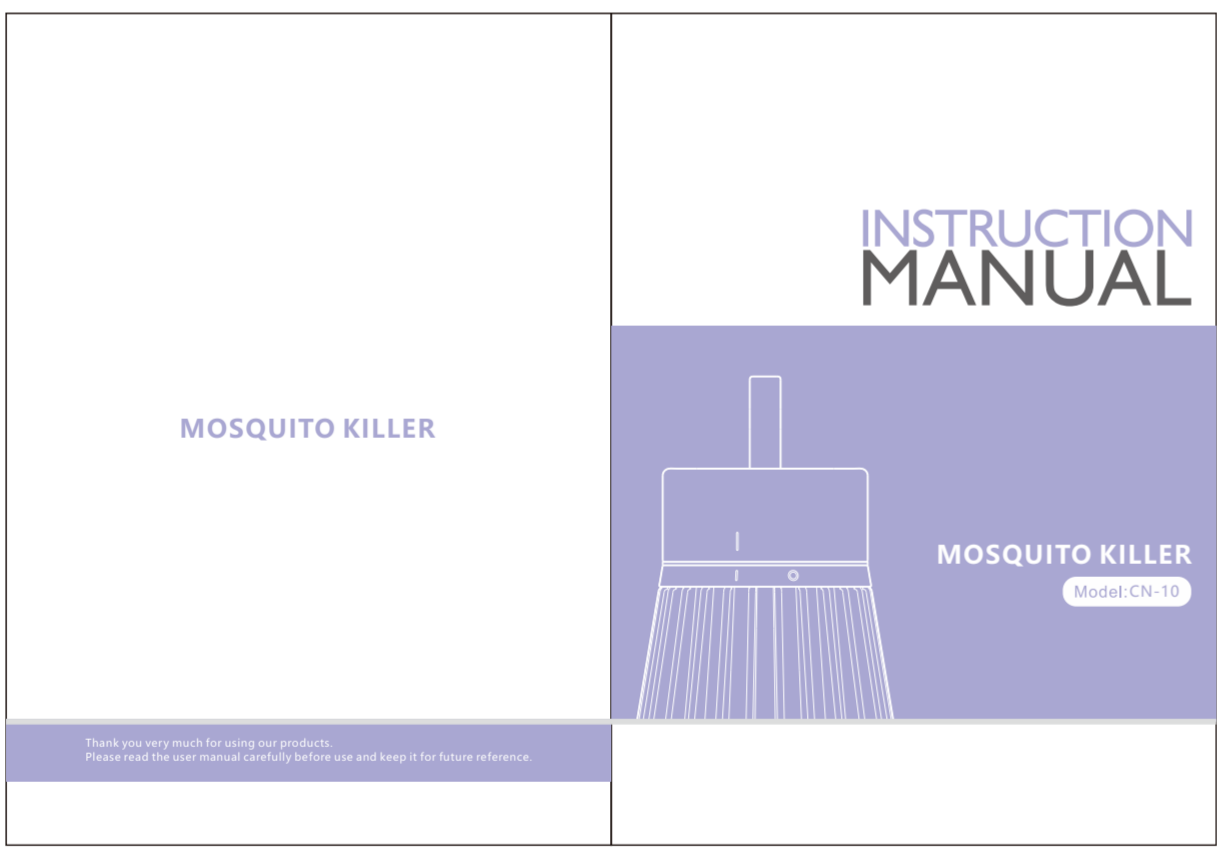
Functional advantages
...

- New design
- Purple light trap
- Physical mosquito killing
- Suitable for mother and baby
- green
- Built-in battery Available outdoors

MOSQUITO KILLER

灭蚊灯英文说明书
尺寸：80.0x110.0mm

灭蚊灯中文说明书
尺寸：80.0x110.0mm



PRODUCT OVERVIEW
components

- ① Carry handle
- ② Charging port
- ③ Indicator light
- ④ Rotary switch
- ⑤ Light guide
- ⑥ Grid
- ⑦ Shell
- ⑧ Bottom shell
- ⑨ Non-slip mat

SPECIFICATIONS

Model NO.	CN-10
Size	87x87x125mm
Net Weight	
Input	
Power	

USE SUGGESTIONS

- Please turn on the mosquito killer lamp at least 2 hours before sleeping.
- The mosquito killer lamp works better under nobody environment as the body's temperature and smell are more attractive to mosquito to affect the using effect.
- The mosquito killer lamp adopts the physical anti-mosquito, without any drugs and chemical ingredients, so mosquito killer lamp can not kill mosquitoes immediately once it turn on.
- Due to kill mosquito by the physical electric shock, the mosquito wrecks that were killed yesterday can be cleaned directly the next day.
- Please keep it use for more than 48 hours continuously for the first time. The use effect is better in dark environment. Please place it higher than 1 meter on the ground. Turn off other lights to ensure the only source of mosquito control.

CLEANING STEPS

Use a cleaning brush to clean mosquitoes and debris from the electric grid, then dump the trash into the garbage can and remember washing your hands.

PACKING LIST

Mosquito killerX1 Charging CableX1 Cleaning brushX1 ManualX1

产品概述
组件

- ① 提手
- ② 充电口
- ③ 指示灯
- ④ 旋转按键
- ⑤ 导光壳
- ⑥ 电网
- ⑦ 外壳
- ⑧ 底壳
- ⑨ 防滑垫

SPECIFICATIONS

型号	CN-10
尺寸	87x87x125mm
净重	
输入值	
功率	

使用提示

- 在卧室灭蚊使用请一定要提前开启（至少2小时），切勿到睡觉时开启。
- 在无人的环境使用效果更佳，因为人体的体温和气味更能诱蚊，避免影响使用效果。
- 本产品采用物理灭蚊，没有任何药物和化学成分，所以灭蚊不是一开机就能立刻灭蚊子。
- 因采用电击物理灭蚊，隔天即可直接清扫掉灭蚊的蚊子残骸。
- 初次使用请连续使用48小时以上，黑暗环境下使用效果更佳，尽量放置在高于地面1米左右的位置，关闭门窗使用，不要放在空调或者风扇出风口，关闭其他灯光，确保灭蚊唯一光源。

清洗步骤

用清洁刷清理电网蚊子及杂物，然后把清扫出来的垃圾倒进垃圾桶里，完成后清洗手部。

包装清单

灭蚊灯X1 充电线X1 清洁刷X1 说明书X1