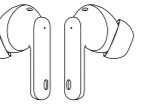


User Manual

Accessories



Charging case



Wireless Earphones



Ear Tips



Ear Tips



Ear Tips



User Manual



Type-C Charging cable

Take Note

Please read this manual carefully before using the BeatBuds X1.

- Do not charge the earphones when they are wet with sweat, etc. as this will cause the charging terminal to become eroded. Please ensure they are dried before charging.



- Ensure the earphones are removed from your pocket when washing clothes. The earphones are not waterproof.



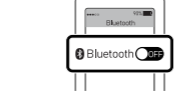
Tips

Warning: If the indicator lights of the two earphones are flashing quickly, it indicates that the L and R earphones are not actively paired.

Solution:

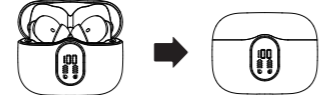
Step 1

Turn off your mobile's Bluetooth.



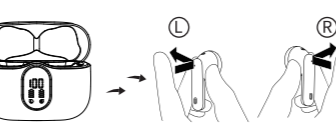
Step 2

Put the two earphones back into the charging case and close the lid.

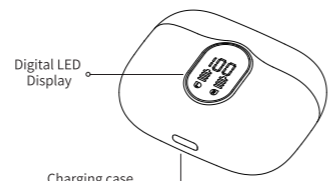


Step 3

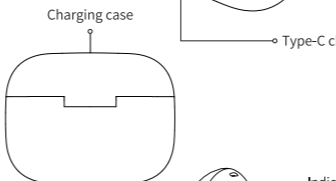
Take out the earphones from the case and tap/touch/press them at the same time to get them paired together. The indicator light on the one earphone will flash quickly, and the other earphone will flash slowly.



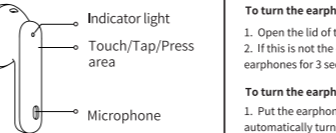
Product Details



Digital LED Display



Charging case



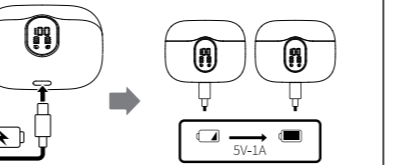
Indicator light

Touch/Tap/Press area

Microphone

Product Usage

- Charge the earphones in the case before using earphones for first time to assist battery life.
- Use the original charging cable to charge the earphones.
- When the charging case is charging, the digital LED screen will show the power status and the light will flash. The light will stay on when fully charged.



How to use

To turn the earphones on once charged:

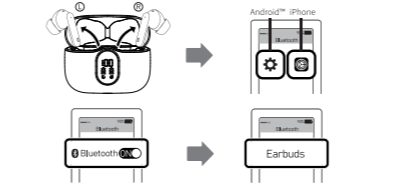
- Open the lid of the case, earphones will automatically turn on.
- If this is not the case, the earphones are in power-off mode, press the two earphones for 3 seconds to turn them back on.

To turn the earphones off:

- Put the earphones back into the case then close the lid, the earphones will automatically turn off.
- If you want to turn them off without the case, press the two earphones for 5 seconds to turn them off.

Bluetooth Pairing

Take the earphones out of the case and search for "BeatBuds X1" on your devices Bluetooth to connect. (In order to remove previous pairing: Manually turn off the earphones and manually turn them back on. After restarting, the pairing history information is cleared.)

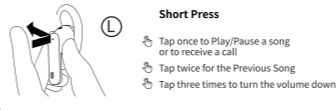
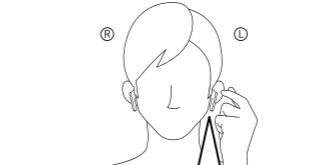


How to wear

Once the earphones are paid put them into your ears, use another ear tip size if needed and wiggle them slightly for the best fit and comfort.

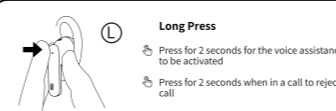


Left Earphone Functions



Short Press

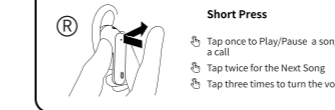
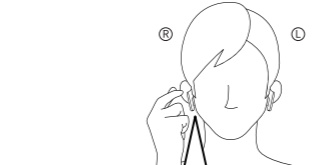
- Tap once to Play/Pause a song or to receive a call
- Tap twice for the Previous Song
- Tap three times to turn the volume down



Long Press

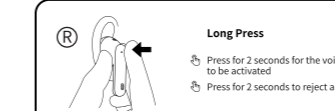
- Press for 2 seconds for the voice assistance to be activated
- Press for 2 seconds when in a call to reject a call

Right Earphone Functions



Short Press

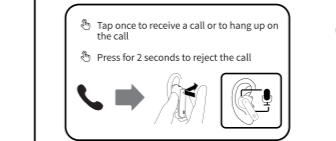
- Tap once to Play/Pause a song or to receive a call
- Tap twice for the Next Song
- Tap three times to turn the volume up



Long Press

- Press for 2 seconds for the voice assistance to be activated
- Press for 2 seconds to reject a call

Call Functions



Tap once to receive a call or to hang up on the call

Press for 2 seconds to reject the call

Earphone charging

Put the earphone into the charging case to charge when it indicates low power.



Product specifications

- Bluetooth Version: V5.3
- Talk time: 4 hours
- Music playtime: 5-6 hours
- Charging time: 1.5 hours
- Battery capacity: 33 mAh
- Charging voltage: DC 5V
- Transmission distance: ... 10m -15m
- Stand-by time: 140 days
- Frequency Response: 20-20000 Hz
- Charging case battery: 320 mAh

Safety Information

Before using and operating the earphones, please read and follow the below precautions to ensure the best performance of the device and to avoid dangerous or illegal situations.

Hearing Loss

- Listening to sound at a high volume may permanently damage your hearing.
- When you use earphones to listen to music or calls, it is recommended to use the minimum volume required for music or calls to avoid damaging your hearing.
- Exposure to high-level volume while driving, your attention may be distracted and cause accidents.

Operating environment

- Do not use the device in dusty, sharp, compact areas or near magnetic fields to avoid failure of the internal circuit of the device.
- When installing the device, please keep away from strong magnetic fields or electrical appliances with strong magnetic fields, such as ovens and refrigerators.
- Do not use the device in thunderstorm weather. Thunderstorm weather may cause equipment failure or electric shock hazard.
- Please use the device within a temperature range of -10 °C ~ + 55 ° C, and store the device and its accessories within a temperature range of -40C ~ + 70 ° C. When the ambient temperature is too high or too low, it may cause device function failure.
- When the temperature is below 5 ° C, the performance of the battery is limited.
- Do not place the device in direct sunlight, such as the window sill or the dashboard of a car.
- Do not place the device near heating sources or exposed fire sources, such as electric heaters, ovens, water heaters, stoves, candles, or other places that may generate high temperatures.
- Do not place sharp metal objects such as pins near the device's earpiece or speaker, otherwise the metal objects may damage the device and/or cause injury to you.

Child health

- This device and its accessories may contain some small parts. Keep the device and its accessories out of children's reach.
- Children may inadvertently damage the device and its accessories, or swallow small parts, causing suffocation or other hazards.
- This device is not a toy, children should use this device under adult supervision.

Battery safety

- Do not disassemble or modify the battery, or immerse in water or other liquids, to avoid battery leakage, excessive, fire or explosion.
- Do not drop, crush or puncture the battery. It can cause internal short circuits and overheating.
- This device is equipped with a non-removable built-in battery.
- Do not replace the battery yourself to avoid damage to the battery or device.

Charger safety

- When charging the device, the power socket should be installed near the device and should be easily accessible.
- When charging is completed or not charging, disconnect the charger from the device and unplug the charger from the power outlet.

Precautions

- The earphones should be stored in a dry well ventilated environment and avoid contact with oil, water vapor, steam, moisture and dust to prevent the performance of the product.
- Avoid using harsh organic solvents or items containing these ingredients to clean the earphones.
- The earphones should be used correctly according to the requirements, and pay attention to the effect of the environment on the product. Make sure the connection is smooth and we recommend a distance between the earphones and device of 10-15 meters.
- If the earphones fail to connect or have poorly connection, please do not dismantle them or the accessories privately.
- When charging the earphones, please use the charger specified by our company.
- To ensure the normal use of the earphones, please make sure they are fully charged.